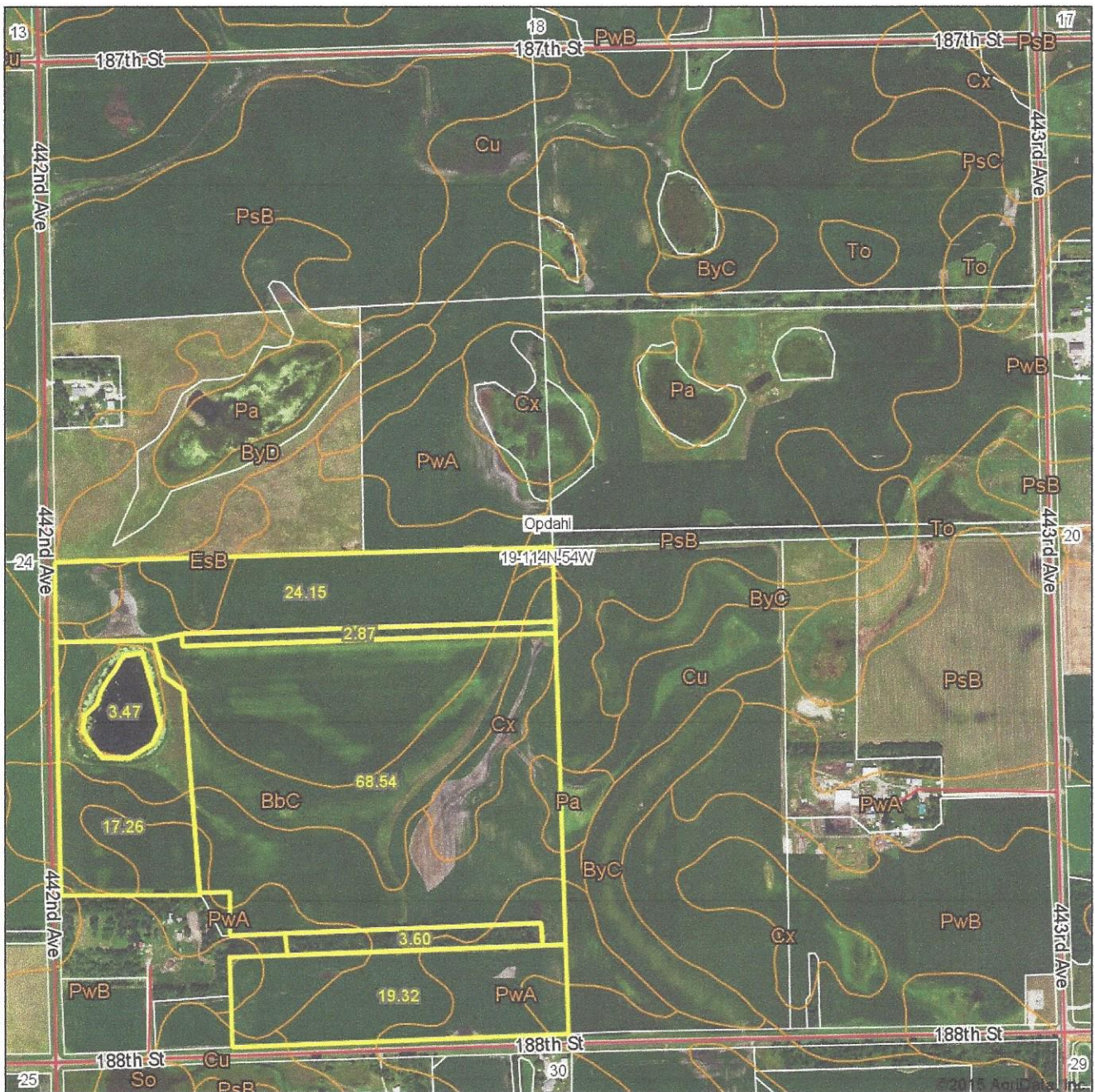
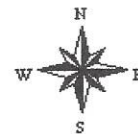


Aerial Map



map center: 44° 39' 59.08, 97° 21' 36.66

scale: 9416



7/13/2015

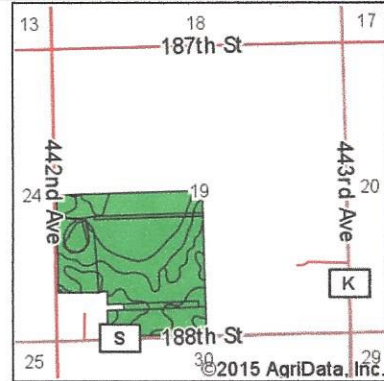
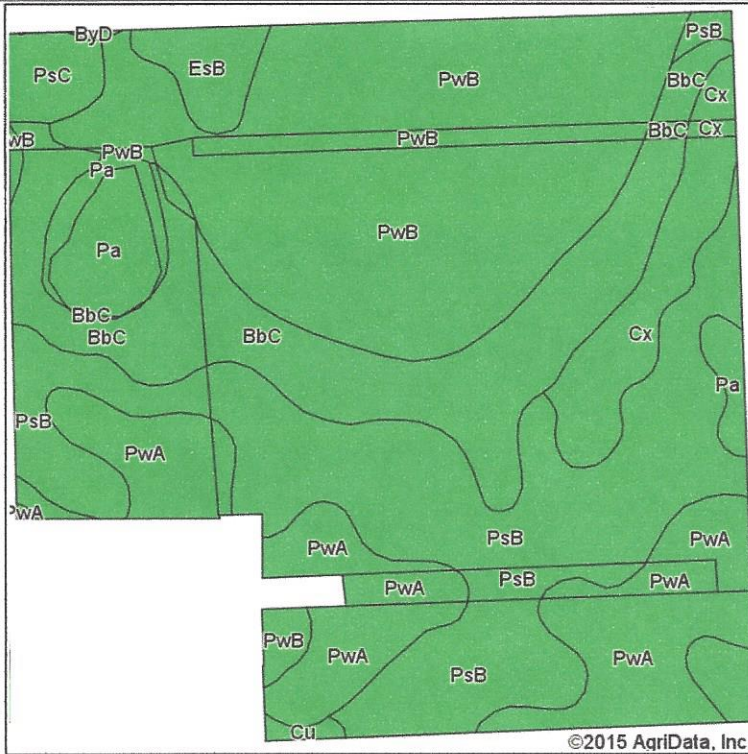
19-114N-54W
Hamlin County
South Dakota

Maps Provided By:



Field borders provided by Farm Service Agency as of 5/21/2008.

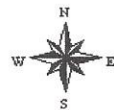
Soil Map



State: **South Dakota**
 County: **Hamlin**
 Location: **19-114N-54W**
 Township: **Opdahl**
 Acres: **139.21**
 Date: **7/13/2015**









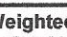
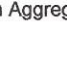
Maps Provided By:

 CUSTOMIZED ONLINE MAPPING
 © AgriData, Inc. 2014 www.AgrIDataInc.com



Soils data provided by USDA and NRCS.

Area Symbol: SD057, Soil Area Version: 16

Code	Soil Description	Acres	Percent of field	PI Legend	Non-Irr Class *c	Productivity Index	State Productivity Index	Alfalfa hay	Corn	Soybeans	Spring wheat	Winter wheat
PwB	Poinsett-Waubay silty clay loams, 1 to 6 percent slopes	41.78	30.0%		Ile	89	77					
PsB	Poinsett-Buse-Waubay complex, 1 to 6 percent slopes	35.91	25.8%		Ile	82	71	3.1	79	29	36	40
BbC	Barnes-Buse loams, 6 to 9 percent slopes	22.04	15.8%		IIle	61	52	2.5	59	21	28	31
PwA	Poinsett-Waubay silty clay loams, 0 to 2 percent slopes	21.15	15.2%		Is	93	80					
Cx	Cubden-Tonka silty clay loams	6.84	4.9%		IIs	75	65	1.8	69	23	24	24
Pa	Parnell silty clay loam	5.95	4.3%		Vw	34	29		28	10	4	1
EsB	Estelline silt loam, 2 to 6 percent slopes	2.72	2.0%		Ile	58	50	2.5	56	21	31	34
PsC	Poinsett-Buse-Waubay complex, 2 to 9 percent slopes	2.34	1.7%		IIle	72	62	2.9	68	25	32	35
Cu	Cubden-Badger silty clay loams	0.39	0.3%		IIs	81	70	2.3	77	26	30	32
ByD	Buse-Poinsett complex, 9 to 15 percent slopes	0.09	0.1%		Vle	50	43	2.2	43	16	22	24
Weighted Average						79.4	68.5	1.4	36.8	13.3	16.3	17.8

*c: Using Capabilities Class Dominant Condition Aggregation Method