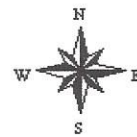


Aerial Map



map center: 44° 55' 35.3, 97° 3' 20.53
 scale: 9522

22-117N-52W
Codington County
South Dakota



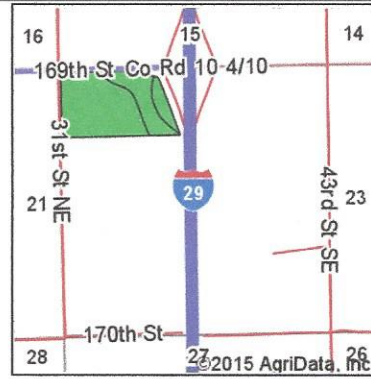
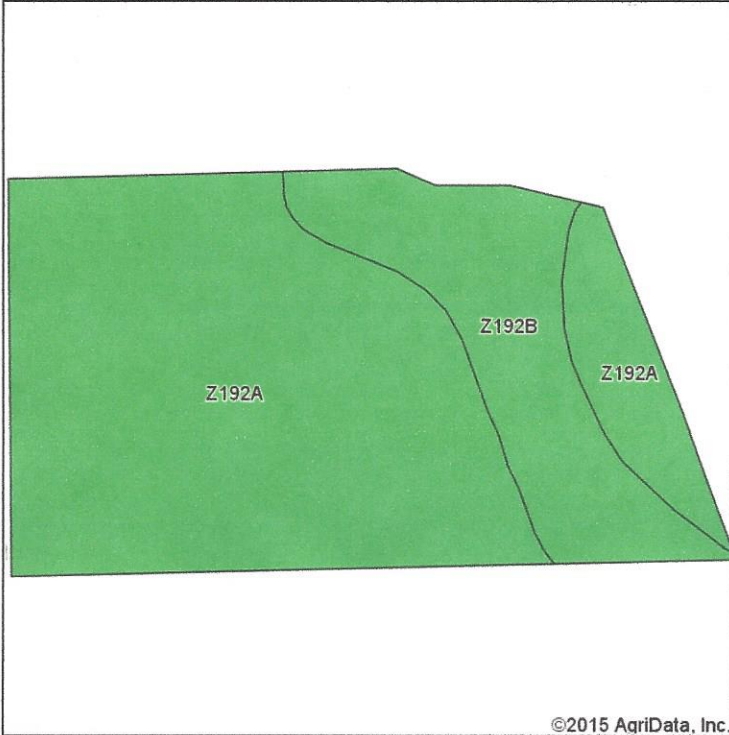
2/26/2015

Maps Provided By:

 CUSTOMIZED ONLINE MAPPING
 © AgriData, Inc. 2014 www.AgriDataInc.com

Field borders provided by Farm Service Agency as of 5/21/2008. Aerial photography provided by Aerial Photography Field Office.

Soil Map





State: **South Dakota**
 County: **Codington**
 Location: **22-117N-52W**
 Township: **Elmira**
 Acres: **61.64**
 Date: **2/26/2015**



Maps Provided By:

 CUSTOMIZED ONLINE MAPPING
 © AgriData, Inc. 2014 www.AgriDataInc.com

Soils data provided by USDA and NRCS.

Area Symbol: SD029, Soil Area Version: 18							
Code	Soil Description	Acres	Percent of field	PI Legend	Non-Irr Class	Productivity Index	State Productivity Index
Z192A	Vienna-Brookings complex, coteau, 0 to 2 percent slopes	47.19	76.6%		I	89	75
Z192B	Vienna-Brookings complex, coteau, 1 to 6 percent slopes	14.45	23.4%		Ile	85	71
Weighted Average						88.1	74.1

Soils data provided by USDA and NRCS.